



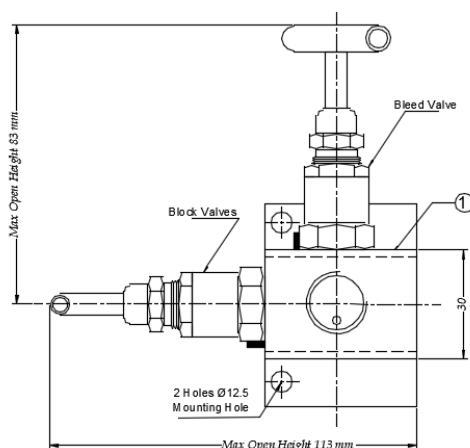
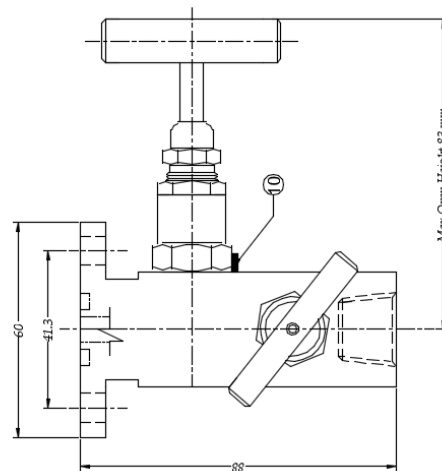
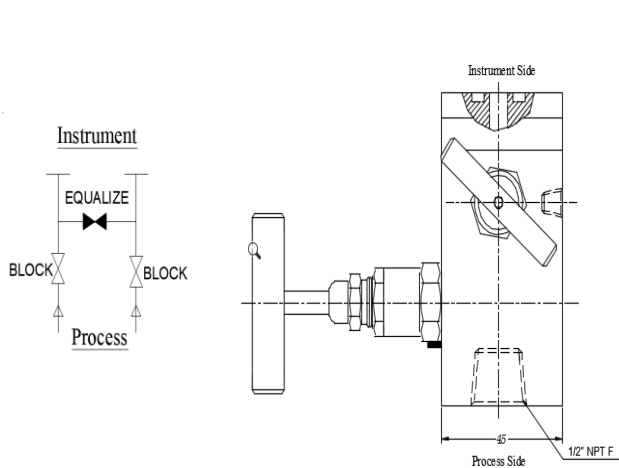
2VM – Pipe to Flange

Model : CEI-2-MV-T

CEIPL 2 Valve Manifold Pipe to Flange Valve is designed in such a manner, which helps in connecting system impulse line & transmitters. Our range of manifold consist two valve configuration which allow for easy isolation, calibration, block and bleed for gauges, pressure switches and static pressure transmitting instrument.

**Features:**

- Withstand high pressure and temperature
- For a higher temperature graphite packing is used.
- Reduce number of fittings and space required for installation.
- Bonnet lock prevents accidents disassembly.

**Technical Specification**

- Max. Pressure : 400bar / 6000psi
- Max. Temperature : 240° C
- Material : SS304/SS316, A105
SS304L/SS316L,
Monel, Hastelloy, Inconel,
- Gland Packing : PTFE, Graphite
- Std. Process Connection : 1/2" NPT (F)
- Std. Drain Connection : As per customer requirement