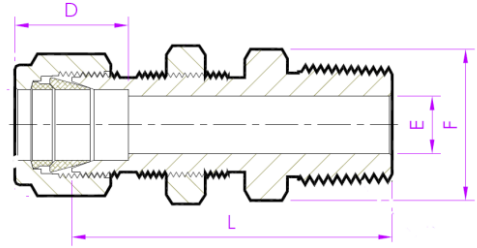




## MALE CONNECTOR

### BULKHEAD NPT



TUBE OD	BSPP SIZE	BASIC ORDERING NUMBER	ALL DIMENSIONS IN INCHES (Fractional)		
			L	D	F
1/8	1/8	CEI-2-BMC-2N-F	1.57	0.50	7/16
3/16	1/8	CEI-3-BMC-2N-F	1.63	0.54	7/16
1/4	1/4	CEI-4-BMC-4N-F	1.84	0.60	9/16
	3/8	CEI-4-BMC-6N-F	1.87	0.60	11/16
	1/2	CEI-4-BMC-8N-F	2.08	0.60	7/8
5/16	1/8	CEI-5-BMC2N-F	1.79	0.64	5/8
	1/4	CEI-5-BMC-4N-F	1.98	0.64	5/8
3/8	1/4	CEI-6-BMC-4N-F	1.97	0.66	11/16
	3/8	CEI-6-BMC-6N-F	1.97	0.66	11/16
	1/2	CEI-6-BMC-8N-F	2.22	0.66	7/8
1/2	1/4	CEI-8-BMC-4N-F	2.09	0.90	13/16
	3/8	CEI-8-BMC-6N-F	2.09	0.90	13/16
	1/2	CEI-8-BMC-8N-F	2.31	0.90	7/8
	3/4	CEI-8-BMC-12N-F	2.32	0.90	1.1/16
5/8	3/8	CEI-10-BMC-6N-F	2.23	0.96	1
	1/2	CEI-10-BMC-8N-F	2.42	0.96	1
3/4	1/2	CEI-12-BMC-8N-F	2.60	0.96	1.1/16
	3/4	CEI-12-BMC-12N-F	2.60	0.96	1.1/16
1	3/4	CEI-16-BMC-12N-F	3.06	1.23	1.3/8
	1	CEI-16-BMC-16N-F	3.19	1.23	1.3/8

TUBE OD	NPT SIZE	BASIC ORDERING NUMBER	ALL DIMENSIONS IN MM (Metrics)		
			L	D	F
6	1/8	CEI-6M-BMC-2N-F	42.2	15.3	14.0
	1/4	CEI-6M-BMC-4N-F	46.2	15.3	14.0
8	1/8	CEI-8M-BMC-2N-F	44.8	16.2	16
	1/4	CEI-8M-BMC-4N-F	50.0	16.2	16
10	1/4	CEI-10M-BMC-4N-F	50.8	17.2	19.0
	3/8	CEI-10M-BMC-6N-F	50.8	17.2	19.0
	1/2	CEI-10M-BMC-8N-F	55.5	17.2	22.0
12	1/4	CEI-12M-BMC-4N-F	53.2	22.8	22.2
	3/8	CEI-12M-BMC-6N-F	54.4	22.8	22.2
	1/2	CEI-12M-BMC-8N-F	58.7	22.8	22.2