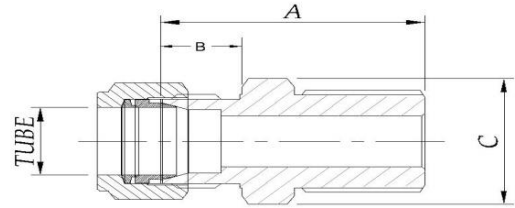




**ISO/BSP Parallel Thread (RS)**



TUBE OD	BSPP SIZE	BASIC ORDERING NUMBER	ALL DIMENSIONS IN MM (Fractional)		
			A	B	C
1/8	1/8	CEI-02-MC-02RS	26.0	10.30	14.0
	1/4	CEI-02-MC-04RS	31.0	10.30	19.0
1/4	1/8	CEI-04-MC-02RS	26.20	10.50	14.0
	1/4	CEI-04-MC-04RS	31.20	10.50	19.0
	3/8	CEI-04-MC-06RS	31.20	10.50	22.0
	1/2	CEI-04-MC-08RS	37.40	10.50	22.0
3/8	1/8	CEI-06-MC-02RS	28.0	11.80	19.0
	1/4	CEI-06-MC-04RS	32.50	11.80	19.0
	3/8	CEI-06-MC-06RS	32.50	11.80	22.0
	1/2	CEI-06-MC-08RS	37.0	11.80	27.0
	3/4	CEI-06-MC-12RS	38.6	11.80	36.0
1/2	1/4	CEI-08-MC-04RS	33.70	12.0	22.0
	3/8	CEI-08-MC-06RS	32.70	12.0	22.0
	1/2	CEI-08-MC-08RS	36.70	12.0	27.0
	3/4	CEI-08-MC-12RS	38.80	12.0	36.0
3/4	1/2	CEI-12-MC-08RS	37.20	12.50	27.0
	3/4	CEI-12-MC-12RS	42.0	12.50	36.0
	1	CEI-12-MC-16RS	44.80	12.50	41.0
1	1/2	CEI-16-MC-08RS	42.70	14.0	36.0
	3/4	CEI-16-MC-12RS	44.0	14.0	36.0
	1	CEI-16-MC-16RS	46.30	14.0	41.0

TUBE OD	NPT SIZE	BASIC ORDERING NUMBER	ALL DIMENSIONS IN MM (Metrics)		
			A	B	C
3	1/8	CEI-3M-MC-02RS	26.50	10.80	14.0
	1/4	CEI-3M-MC-04RS	31.50	10.80	19.0
6	1/8	CEI-6M-MC-02RS	26.50	10.80	14.0
	1/4	CEI-6M-MC-04RS	31.50	10.80	19.0
	3/8	CEI-6M-MC-06RS	31.50	10.80	22.0
	1/2	CEI-6M-MC-08RS	35.50	10.80	27.0
8	1/8	CEI-8M-MC-02RS	28.10	12.40	14.0
	1/4	CEI-8M-MC-04RS	33.10	12.40	19.0
	3/8	CEI-8M-MC-06RS	33.10	12.40	22.0
	1/2	CEI-8M-MC-08RS	37.10	12.40	27.0
10	1/4	CEI-10M-MC-04RS	33.20	12.50	19.0
	3/8	CEI-10M-MC-06RS	33.20	12.50	22.0
	1/2	CEI-10M-MC-08RS	37.70	12.50	27.0
12	1/4	CEI-12M-MC-04RS	34.20	12.50	22.0
	3/8	CEI-12M-MC-06RS	33.20	12.50	22.0
	1/2	CEI-12M-MC-08RS	37.70	12.50	27.0
	3/4	CEI-12M-MC-12RS	41.50	12.50	35.0
14	3/8	CEI-14M-MC-06RS	33.20	12.50	25.0
	1/2	CEI-14M-MC-06RS	37.70	12.50	25.0
15	3/8	CEI-15M-MC-06RS	33.70	12.50	25.0
	1/2	CEI-15M-MC-08RS	37.70	12.50	27.0
	3/4	CEI-15M-MC-12RS	41.70	12.50	35.0
16	3/8	CEI-16M-MC-06RS	33.20	12.50	25.0
	1/2	CEI-16M-MC-08RS	38.20	12.50	27.0
	3/4	CEI-16M-MC-12RS	41.50	12.50	35.0