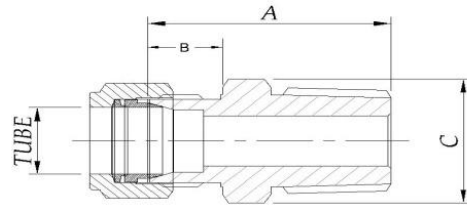




ISO/BSP Tapered Thread (RT)



TUBE OD	BSPT SIZE	BASIC ORDERING NUMBER	ALL DIMENSIONS IN MM (Fractional)		
			A	B	C
1/16	1/16	CEI-01-MC-01RT	22.70	8.0	11.0
	1/8 1/4	CEI-01-MC-02RT	22.70	8.0	11.0
		CEI-01-MC-04RT	28.20	8.0	14.0
1/8	1/16	CEI-02-MC-01RT	25.0	10.3	11.0
	1/8	CEI-02-MC-02RT	25.0	10.3	11.0
	1/4	CEI-02-MC-04RT	30.50	10.3	14.0
	3/8	CEI-02-MC-06RT	30.50	10.3	17.5
	1/2	CEI-02-MC-08RT	35.40	10.3	22.0
3/16	1/16	CEI-02-MC-01RT	25.20	10.5	11.0
	1/8	CEI-02-MC-02RT	25.70	10.5	14.0
	1/4	CEI-02-MC-04RT	30.50	10.5	14.0
1/4	1/16	CEI-04-MC-01RT	26.0	10.5	14.0
	1/8	CEI-04-MC-02RT			
	1/4	CEI-04-MC-04RT			
	3/8		30.50	10.5	19.0
	1/2	CEI-04-MC-06RT	37.40	10.5	22.0
	3/4	CEI-04-MC-08RT CEI-04-MC-12RT	38.60	10.5	27.0
5/16	1/8	CEI-05-MC-02RT	26.50	11.8	14.0
	1/4	CEI-05-MC-04RT	32.0	11.8	14.0
	3/8	CEI-05-MC-06RT	32.0	11.8	17.50
3/8	1/8	CEI-06-MC-02RT	28.0	11.8	17.50
	1/4	CEI-06-MC-04RT	32.50	11.8	17.50
	3/8	CEI-06-MC-06RT	32.50	11.8	17.50
	1/2	CEI-06-MC-08RT	38.90	11.8	22.0
	3/4	CEI-06-MC-12RT	39.90	11.8	27.0
	1	CEI-06-MC-16RT	47.80	11.8	36.0
1/2	1/8	CEI-08-MC-02RT	27.70	12.0	22.0
	1/4	CEI-08-MC-04RT	33.20	12.0	22.0
	3/8	CEI-08-MC-06RT	33.20	12.0	22.0
	1/2	CEI-08-MC-08RT	38.10	12.0	22.0
	3/4	CEI-08-MC-12RT	40.10	12.0	27.0
	1	CEI-08-MC-16RT	47.0	12.0	36.0
5/8	1/4	CEI-10-MC-04RT	28.20	12.50	25.0
	3/8	CEI-10-MC-06RT	33.70	12.50	25.0
	1/2	CEI-10-MC-08RT	38.80	12.50	25.0
	3/4	CEI-10-MC-12RT	40.60	12.50	27.0
3/4	1/2	CEI-12-MC-08RT	40.40	12.50	27.0
	3/4	CEI-12-MC-12RT	39.60	12.50	27.0
	1	CEI-12-MC-16RT	47.50	12.50	36.0
1	1/2	CEI-16-MC-08RT	45.10	14.0	36.0
	3/4	CEI-16-MC-12RT	45.10	14.0	36.0
	1	CEI-16-MC-16RT	50.0	14.0	36.0
1 1/8	1	CEI-24-MC-16RT	59.40	18.0	55.0

TUBE OD	NPT SIZE	BASIC ORDERING NUMBER	ALL DIMENSIONS IN MM (Metrics)		
			A	B	C
2	1/8	CEI-2M-MC-02RT	23.50	8.0	11.0
3	1/8	CEI-3M-MC-01RT	25.50	10.80	11.0
	1/4	CEI-3M-MC-02RT	30.0	10.80	14.0
6	1/8	CEI-6M-MC-02RT	26.0	10.80	14.0
	1/4	CEI-6M-MC-04RT	31.0	10.80	14.0
	3/8	CEI-6M-MC-06RT	31.0	10.80	19.0
	1/2	CEI-6M-MC-08RT	27.30	10.80	22.0
8	1/8	CEI-8M-MC-02RT	26.70	12.40	16.0
	1/4	CEI-8M-MC-04RT	32.60	12.40	14.0
	3/8	CEI-8M-MC-06RT	32.60	12.40	19.0
	1/2	CEI-8M-MC-08RT	38.50	12.40	22.0
10	1/8	CEI-10M-MC-02RT	29.20	12.50	19.0
	1/4	CEI-10M-MC-04RT	32.70	12.50	19.0
	3/8	CEI-10M-MC-06RT	32.70	12.50	19.0
	1/2	CEI-10M-MC-08RT	38.60	12.50	22.0
	3/4	CEI-10M-MC-12RT	39.60	12.50	27.0
12	1/8	CEI-12M-MC-02RT	28.20	12.50	22.0
	1/4	CEI-12M-MC-04RT	32.70	12.50	22.0
	3/8	CEI-12M-MC-06RT	33.70	12.50	22.0
	1/2	CEI-12M-MC-08RT	38.50	12.50	22.0
	3/4	CEI-12M-MC-12RT	39.60	12.50	27.0
14	1/4	CEI-14M-MC-04RT	34.70	12.50	25.0
	3/8	CEI-14M-MC-06RT	34.70	12.50	25.0
	1/2	CEI-14M-MC-08RT	39.60	12.50	25.0
15	1/2	CEI-15M-MC-08RT	39.60	12.50	25.0
16	3/8	CEI-16M-MC-06RT	34.70	12.50	25.0
	1/2	CEI-16M-MC-08RT	40.60	12.50	25.0
	3/4	CEI-16M-MC-12RT	40.60	12.50	27.0
18	1/2	CEI-18M-MC-08RT	41.0	13.0	27.0
	3/4	CEI-18M-MC-12RT	41.0	13.0	27.0
22.0	3/4	CEI-22M-MC-12RT	35.0	13.50	32.0
25.0	1/2	CEI-25M-MC-08RT	47.10	14.0	36.0
	3/4	CEI-25M-MC-12RT	47.10	14.0	36.0
	1	CEI-25M-MC-16RT	52.0	14.0	36.0
28	1/2	CEI-28M-MC-08RT	47.10	16.0	41.0
	3/4	CEI-28M-MC-12RT	47.10	16.0	41.0
	1	CEI-28M-MC-16RT	52.0	16.0	41.0